

West Area Health Forum: 2021 Census

David Golding

Data Analyst

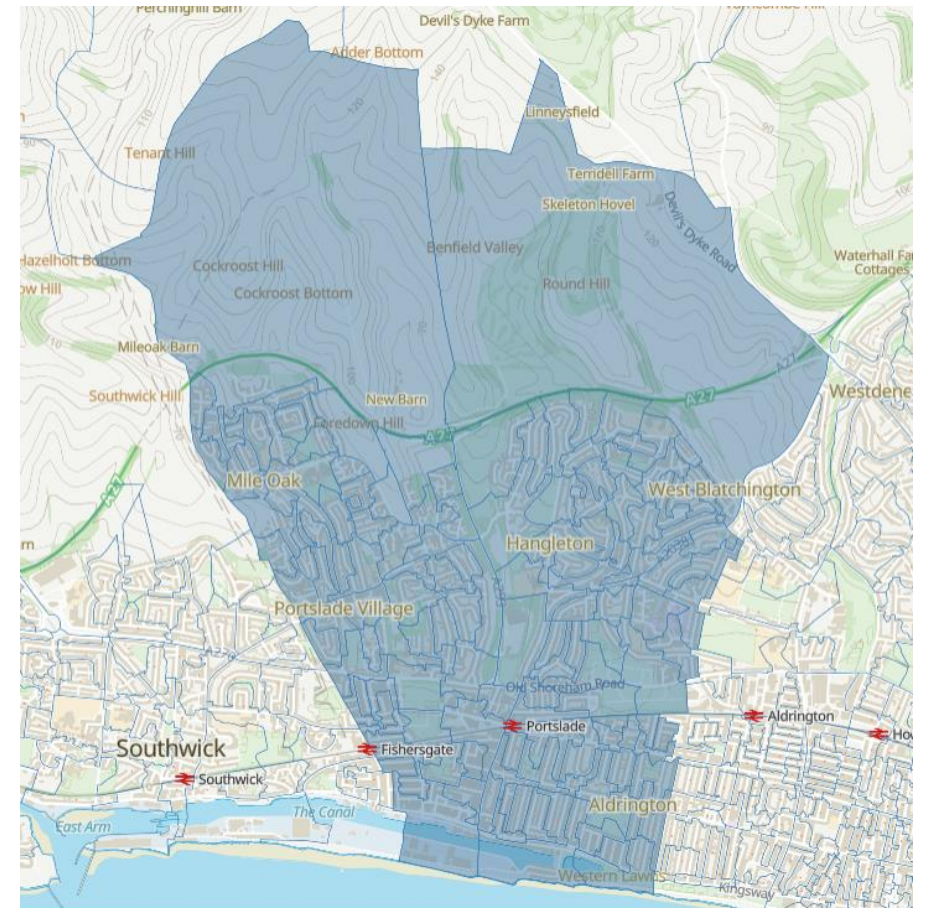
Public Health Intelligence team

Brighton & Hove City Council

david.golding@brighton-hove.gov.uk

Content:

- **Overview of 2021 census population**
 - Usual residents
 - Households
- **Population groups**
 - Age profiles
 - Household types
 - Ethnicity
 - Disability
 - Un-paid care
 - Qualifications
- **Round up**
 - Key points
 - Observations
 - Discussion



Number of households with at least one usual resident

West Hove household estimate: 17,691

- 223 more households (1.2%) than seen in the 2011 census
 - Rest of Brighton & Hove: 314 fewer households
 - All Brighton & Hove: 139 fewer household

Usual resident population

West Hove usual resident population: 43,674

- 1,358 more people (3%) than seen in the 2011 census
 - Rest of Brighton & Hove: 1% higher
 - All Brighton & Hove: 1% higher

A household is:

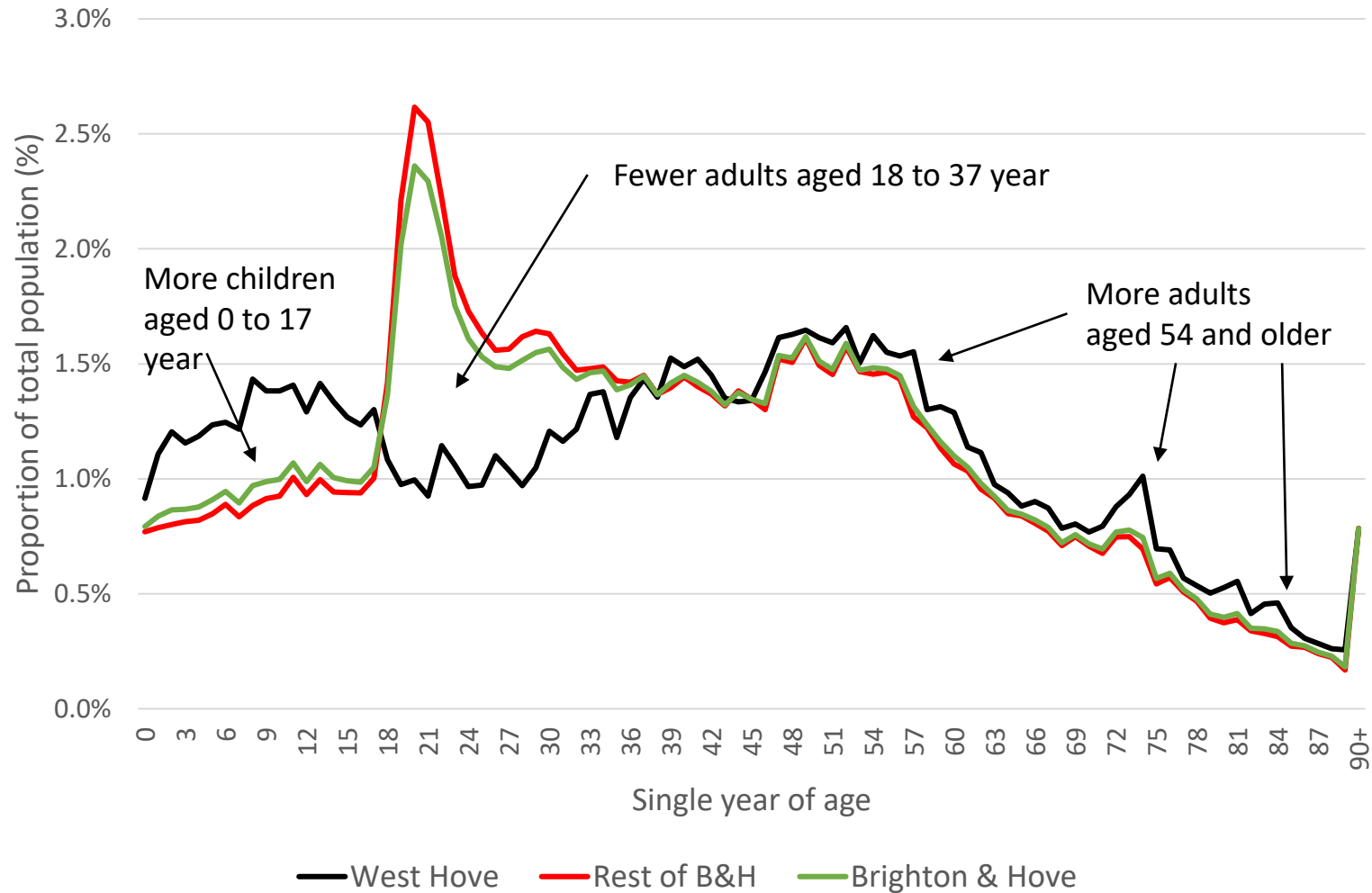
- one person living alone: or
- a group of people (not necessarily related) living at the same address who share cooking facilities and share a living room or sitting room or dining area

A household must have at least one usual resident at the address. A group of short-term residents living together or a group of visitors staying at an address is not classified as a household.

Usual resident:

A usual resident is anyone who on Census Day, 21 March 2021 was in the UK and had stayed or intended to stay in the UK for a period of 12 months or more or had a permanent UK address and was outside the UK and intended to be outside the UK for less than 12 months.

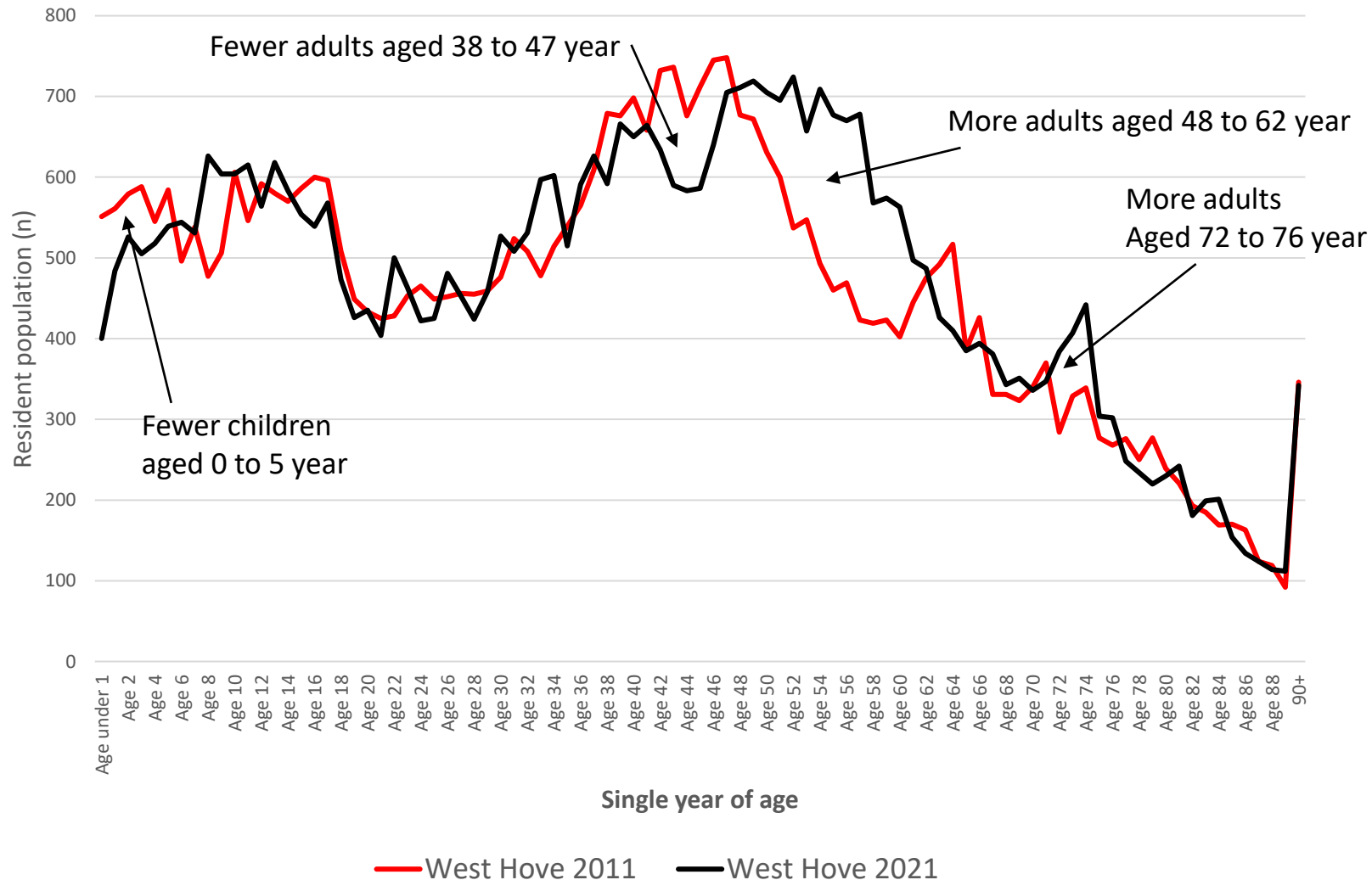
West Hove usual resident population: Comparison with the rest of the city



Difference between West Hove and the rest of the city, proportionally...

- More children aged 0 to 17
- Fewer adults aged 18 to 37
- More adults aged 54 and older

West Hove usual resident population: Comparison between 2011 and 2021 Censuses



Difference between 2021 Census and 2011 Census

- Fewer children aged 0 to 5 (436 people, 13%)
- Fewer adults aged 38 to 47 (750 people, 11%)
- More adults aged 48 to 62 (1,961 people, 26%)
- More adults aged 72 to 76 (342 people, 20%)

West Hove household composition, 2021 Census

Total number of households = 17,691

	West Hove		Rest of the city	Brighton & Hove
One person household	4,840	27%	36%	35%
- Aged 66 years and over	2,390	14%	11%	11%
Single family household	11,532	65%	52%	54%
- All aged 66 years and over	1,271	7%	5%	5%
Households with dependent children	5,902	33%	22%	24%
- Lone parent family	1,364	8%	6%	6%

Compared to the rest of the city and Brighton and Hove as a whole, West Hove has proportionally;

- Fewer one person households but more one person households over the age of 66 years old.
- More single-family households including those where all family members are over the age of 66.
- More households with dependent children and more lone parent households

Ethnic groups in West Hove

	West Hove	Rest of B&H	Brighton & Hove
Asian, Asian British:	1,800	4%	5%
Bangladeshi	629	1%	0%
Chinese	250	1%	1%
Indian	380	1%	1%
Pakistani	124	0%	0%
Other Asian	417	1%	1%
Black, Black British:	685	2%	2%
African	508	1%	1%
Caribbean	95	0%	0%
Other Black	82	0%	0%
Mixed or Multiple ethnic:	1,755	4%	5%
White and Asian	494	1%	2%
White and Black African	378	1%	1%
White and Black Caribbean	297	1%	1%
Other Mixed or Multiple	586	1%	2%
White:	37,730	86%	85%
UK or British	34,591	79%	73%
Irish	425	1%	2%
Gypsy or Irish Traveller	15	0%	0%
Roma	88	0%	0%
Other White	2,611	6%	10%
Other ethnic group	1,744	4%	3%
Arab	625	1%	1%
Any other ethnic group	1,119	3%	2%
BME (non-white UK/British)	9,123	21%	27%

More than a fifth of residents (9,123 people, 21%) are BME (non-White UK/British)

- Rest of Brighton & Hove (27%), Brighton & Hove (26%).

The number of BME residents has increased by nearly a half (2,981 people, 49%).

Other White

- Just under a third of BME residents are other White (2,611 people, 29%).
- One in twenty of all residents (6%).
- Increased by 1,111 people (74%)

Mixed ethnicity

- Nearly a fifth of BME residents are of mix ethnicity (1,755 people, 19%)
- One in twenty-five of all residents (4%)
- increased by 442 people (34%)

Asian / Asian British

- A fifth of BME residents are Asian (1,800 people, 20%)
- One in twenty-five of all residents (4%)
- increased by 317 (21%)

Black / Black British

- Nearly one in ten of BME residents are Black (685 people, 8%)
- One in fifty of all residents (2%)
- The number of Black residents has increased by 99 people (17%)

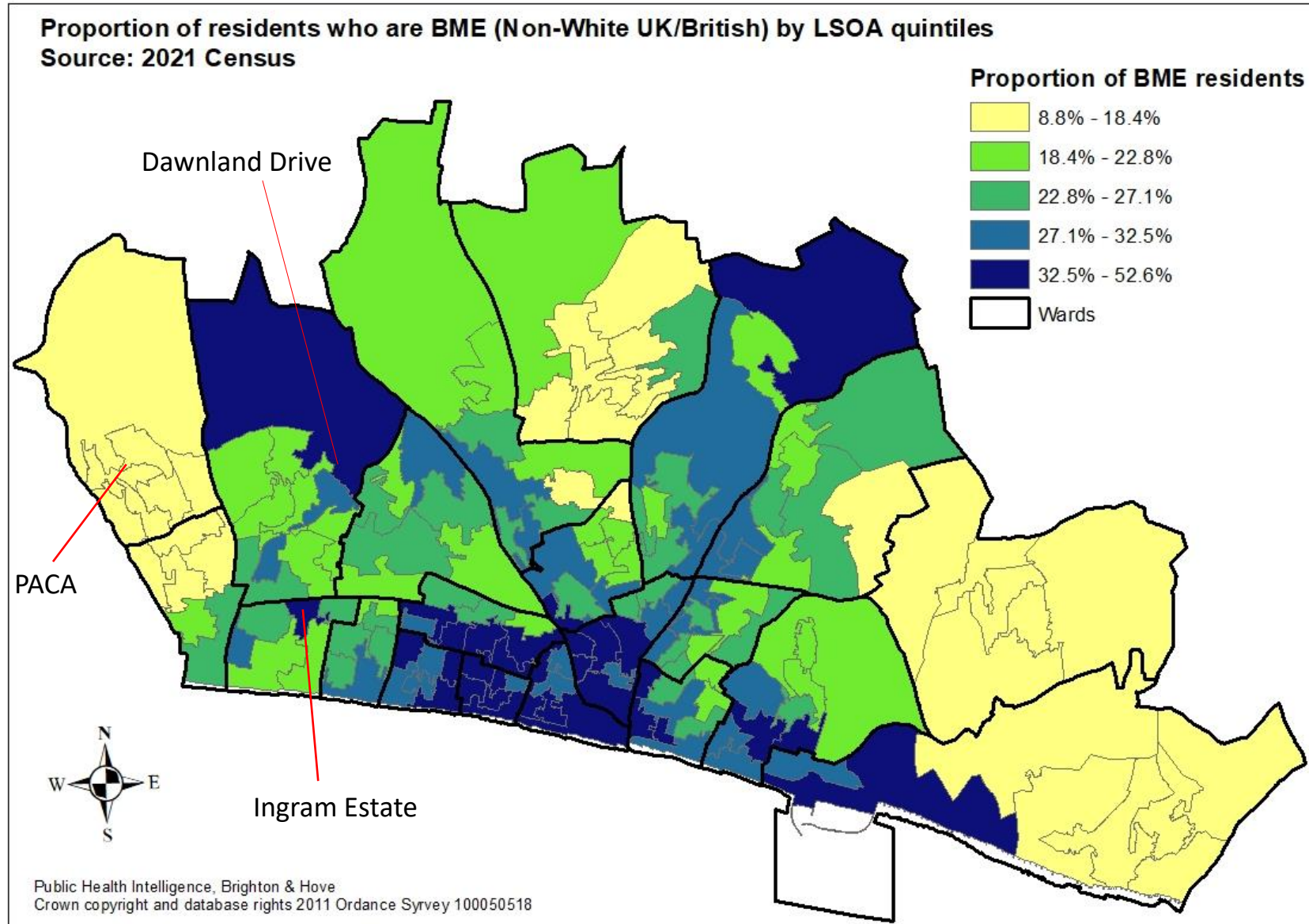
Arab

- More than one in twenty of BME residents are Arab (625 people, 7%)
- One in 100 of all residents (1%)
- increased by 90 people (17%)

Any other ethnic group

- More than one in twenty of BME residents are Arab (1,119 people, 12%)
- One in 30 of all residents (3%)
- increased by 843 people (305%)

2021 Census: Ethnicity



- 33,700 LSOAs in England
- 165 LSOAs in Brighton & Hove

- 2 LSOAs in Brighton & Hove have less than 10% BME residents.
 - North Portlade

- 2 LSOAs in Brighton & Hove have over 50% BME residents.
 - Around Brighton Station
 - Tarner and Albian Hill

- 31 LSOAs (19%) have over third (33%) BME residents
 - predominantly central and coastal areas

2021 Census: Residents classified as disabled in West Hove

Proportion of residents who are classified as disabled under the Equalities Act.

	West Hove	Rest of B&H	Brighton & Hove
All usual residents	43,681		
Disabled under the Equality Act	8,179	19%	19%
• Day-to-day activities limited a lot	3,511	8%	7%
• Day-to-day activities limited a little	4,668	11%	11%
Not disabled under the Equality Act	35,502	81%	81%
• Has long term physical or mental health condition but day-to-day activities are not limited	3,069	7%	8%
• No long term physical or mental health conditions	32,433	74%	74%

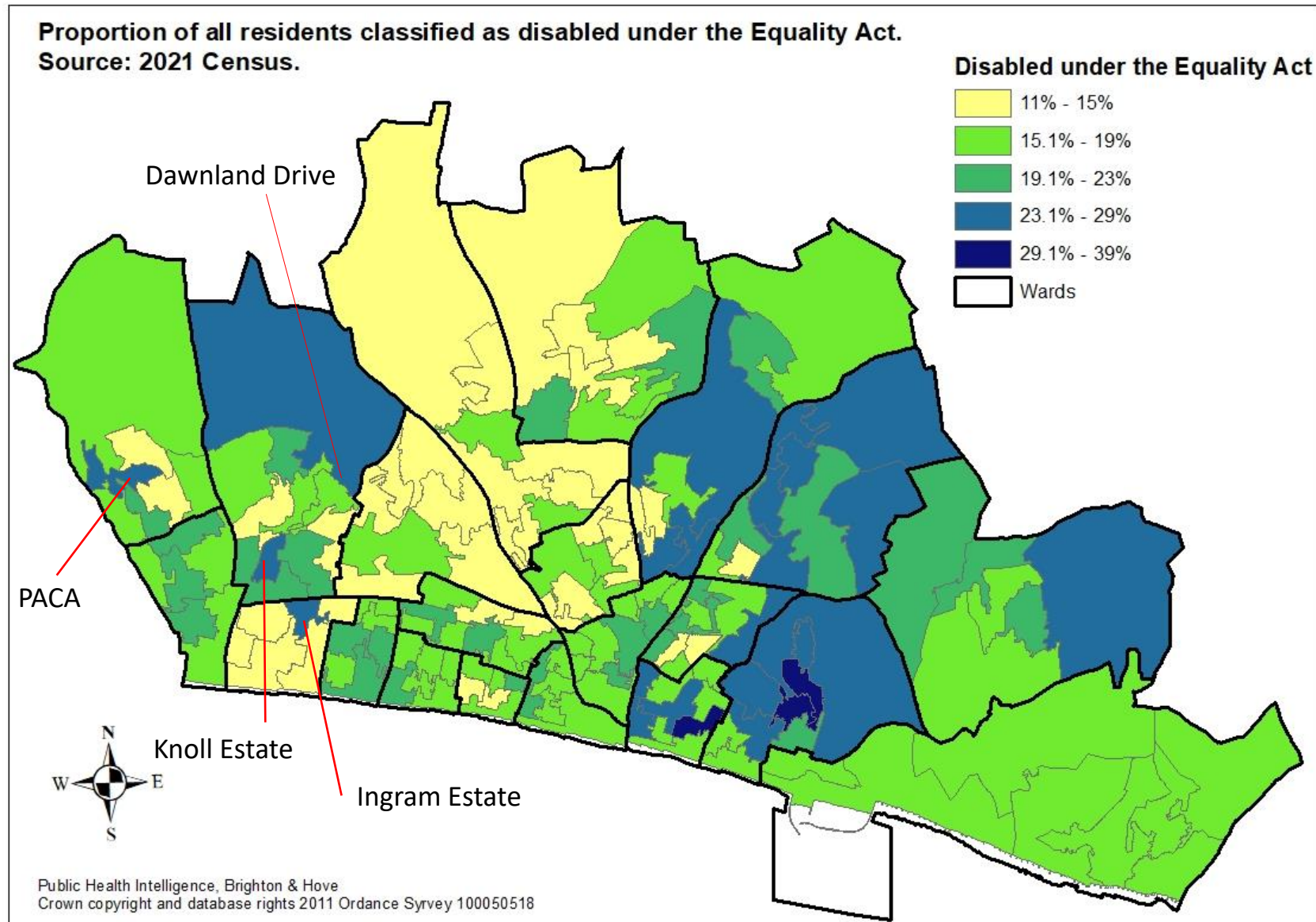
One in five (8,179 people, 19%) are disabled.

- Rest of Brighton & Hove (19%) and Brighton & Hove (19%)
- 3,511 people (43%) activities are limited 'a lot'
- 4,668 (57%) activities are limited 'a little'.

Nearly three quarters of residents (32,433 people) have no long term physical or mental health condition (74%).

The Equality Act defines an individual as disabled... if they have a physical or mental impairment that has a substantial and long-term negative effect on their ability to carry out normal day-to-day activities

2021 Census: Residents classified as disabled



Residents with a disability under the Equalities Act are concentrated in our most deprived neighbourhoods in central/eastern area of the city particularly in **East Brighton, Queens Park and Hollingbury & Stanmore wards.**

There are also higher proportions of disabled people in other deprived neighbourhoods in the **east in Woodingdean and to the west in Hangleton and Mile Oak.**

2021 Census: Unpaid care in West Hove

	West Hove		Rest of the City	Brighton & Hove
All usual residents aged 5+	41,246			
Provides no unpaid care	37,311	90%	92%	92%
Provides 9 hours or less unpaid care a week	1,454	4%	3%	3%
Provides 10 to 19 hours unpaid care a week	475	1%	1%	1%
Provides 20 to 34 hours unpaid care a week	405	1%	1%	1%
Provides 35 to 49 hours unpaid care a week	429	1%	1%	1%
Provides 50 or more hours unpaid care a week	1,172	3%	2%	2%

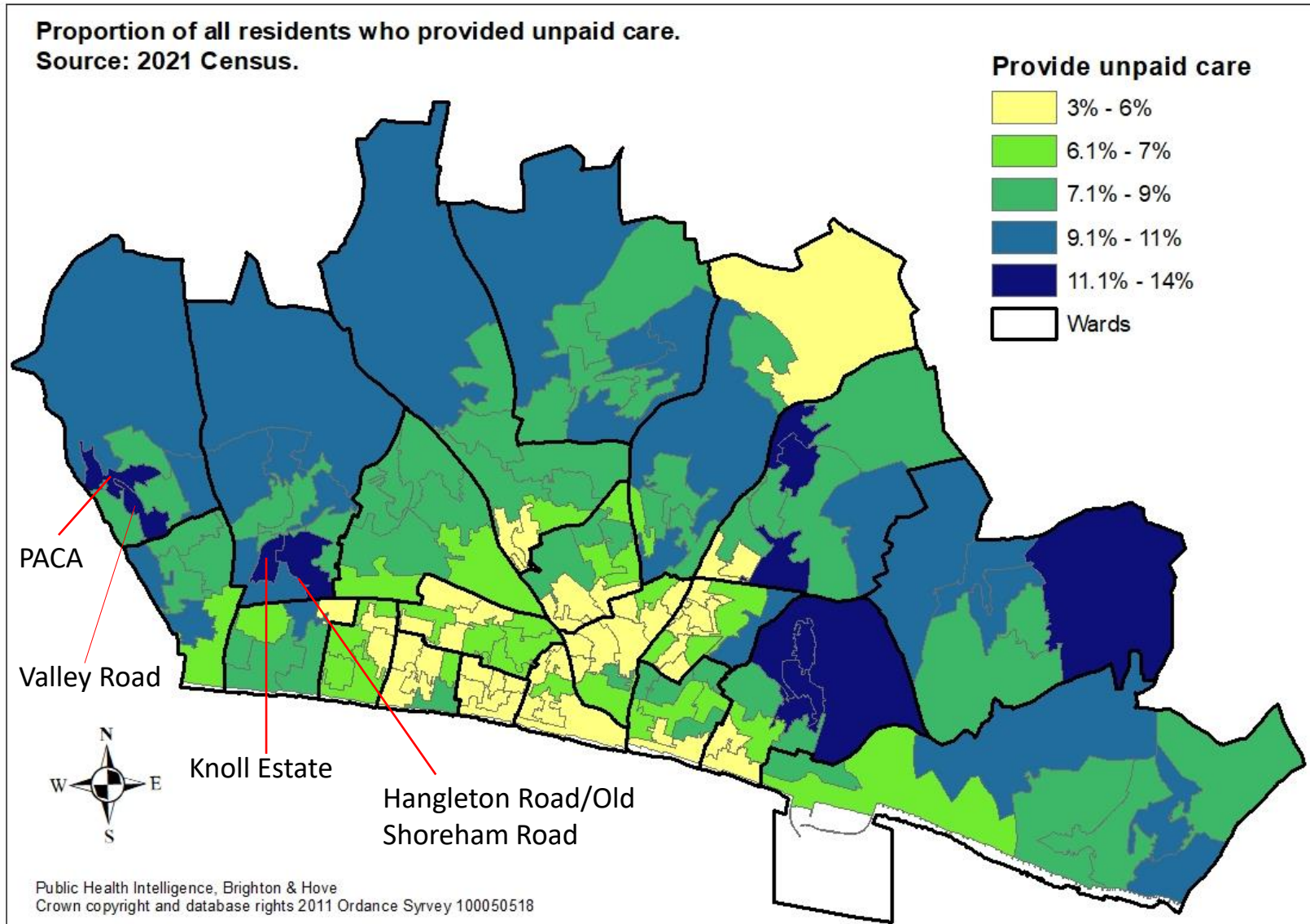
One in ten residents (3,935 people, 10%) provide un-paid care

- Rest of Brighton & Hove (8%) and Brighton & Hove (8%).
- Lower than seen in 2011 (11%)

Among residents who provide un-paid care.

- More than a third (1,601 people, 41%) provide more than 35 hours of un-paid care a week,
- a quarter (1,172 people, 30%) providing more than 50 hours of un-paid care a week.

2021 Census: Unpaid care



Residents providing unpaid care live in all areas of the city but there are proportion fewer in central areas of the city compared to outer areas.

Proportionally, nearly five time more residents on the **Knoll Estate** provide un-paid care as do residents living near **Lewes Road south of the gyratory**.

2021 Census: Highest level of qualification in West Hove

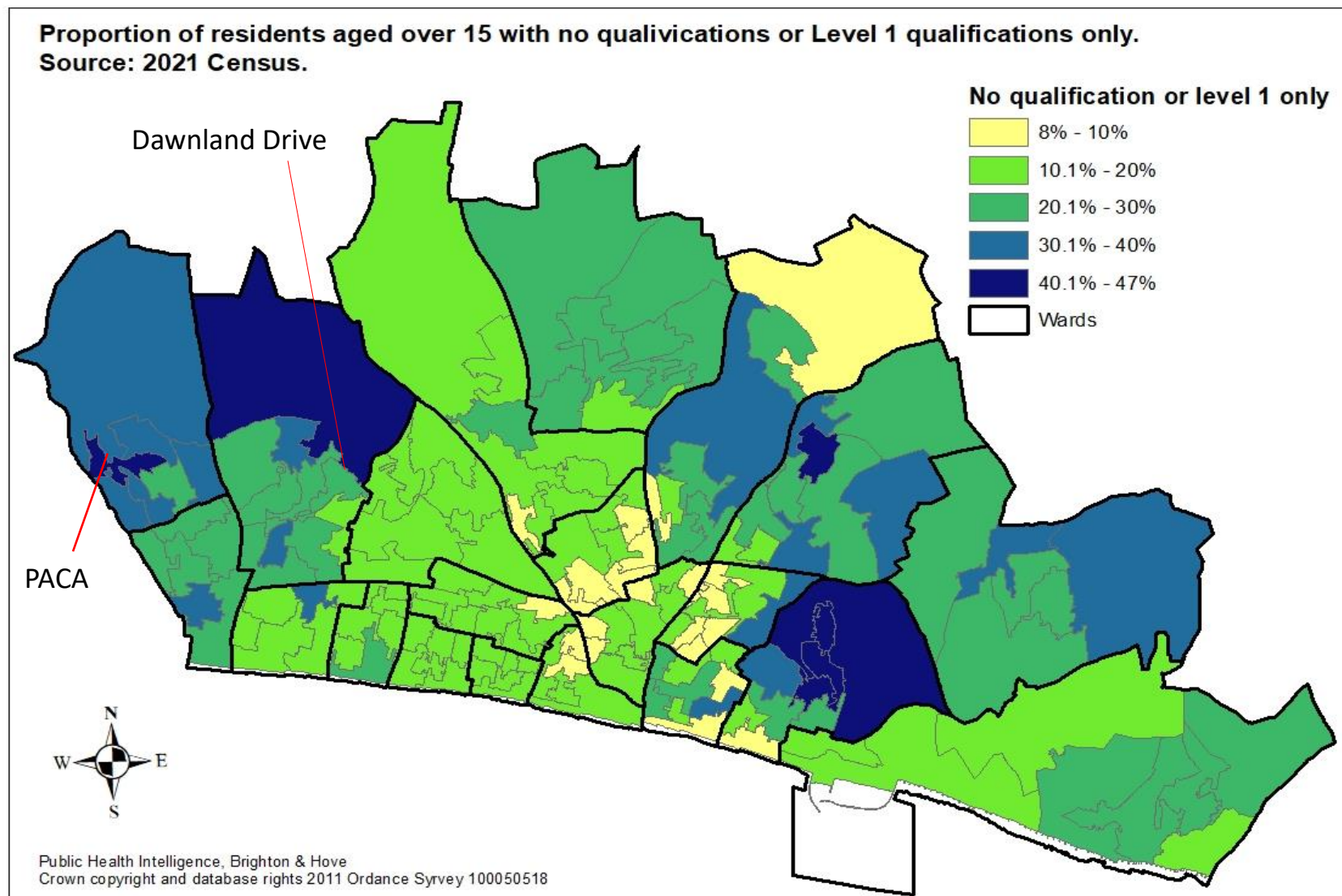
	West Hove		Rest of B&H	Brighton & Hove
All usual residents aged 16 years and over	34,869			
No qualifications	6,088	17%	12%	12%
Level 1 and entry level qualifications	3,644	10%	6%	7%
Level 2 qualifications (for example 5 or more GCSEs (A* to C or 9 to 4))	4,705	13%	10%	11%
Apprenticeship	1,747	5%	3%	3%
Level 3 qualifications (for example 2 or more A levels)	5,682	16%	20%	20%
Level 4 qualifications or above (degree or higher qualification)	12,014	34%	46%	45%
Other qualifications	989	3%	2%	2%

West Hove residents are not as highly educated as the rest of the city's population.

- Less than one in five (27%) have no or only entry level qualifications. Significantly more than the rest of the city and Brighton & Hove as a whole, both 12%
- A third of residents (34%) have a Level 4 qualification or higher. Significantly lower than the rest of the city (46%) and Brighton & Hove (45%)

....However, the gap is closing

2021 Census: Highest level of qualification



- 33,700 LSOAs in England
- 165 LSOAs in Brighton & Hove

In Brighton & Hove...

- 8 LSOAs with less than 10% with no or entry level qualifications
 - Stanmer
 - Preston Park
- 17 LSOAs with more than 33% with no or entry level qualifications
 - predominantly in areas with the highest level of deprivation
 - Highest in Whitehawk, North Moulsecomb, North Hangleton and Mile Oak

2021 Census

Take a look for yourselves...

- ONS: <https://www.ons.gov.uk/census>
 - Find facts and figures about areas
 - View census data on a map
 - Build a custom area profile
- Community Insight: <https://brighton-hove.communityinsight.org/>
- Brighton & Hove City Council website: [Census results 2021 \(brighton-hove.gov.uk\)](#)
- Bespoke census profiles including
 - [Brighton & Hove Census briefing - sexual orientation – Infogram](#)
 - [Brighton & Hove Census briefing - gender identity – Infogram](#)
 - [Veterans - Sussex Census briefing - Infogram](#)
- Best place to find and download 2021 Census raw data: https://www.nomisweb.co.uk/sources/census_2021

Key points

West Hove has a...

- very different population profile to that of Brighton & Hove
- higher proportion of pension age residents living alone
- is becoming more ethnically diverse
- high proportion of un-paid carers, including those providing more than 50 hours of unpaid care

Observations / discussion

- Is West Hove more Sussex than Brighton?
- Are local neighbourhoods dividing along demographics characteristics?
- Does either of this matter?